

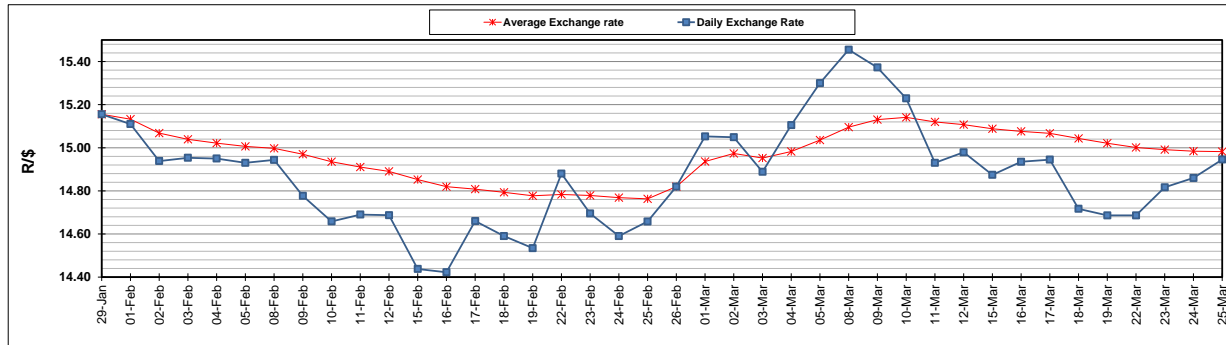
	PETROL 95 ULP	PETROL 93 ULP & LRP	DIESEL 0.05%	DIESEL 0.005%	ILL. PAR.
GAUTENG PUMP PRICE (SA c/l) AS FROM 03/03/2021	1,632.000	1,615.000	-	-	-
WHOLESALE PRICE (SA c/l) AS FROM 03/03/2021	-	-	1,412.420	1,416.820	845.688
SINGLE NATIONAL MAXIMUM RETAIL PRICE	-	-	-	-	1,071.000
BASIC FUEL PRICE - 25/03/2021 (SA c/l)	705.246	690.406	640.536	643.036	619.074
PRESS RELEASE CONTRIBUTION TO BFP 03/03/2021 - 25/03/2021 (SA c/l)	665.170	658.170	653.630	658.030	633.128
UNIT OVER/(UNDER) RECOVERY - 25/03/2021 (SA c/l)	(40.076)	(32.236)	13.094	14.994	14.054
AVERAGE BASIC FUEL PRICE 26/02/2021 - 25/03/2021	730.022	718.417	688.206	690.927	665.891
AVERAGE UNIT OVER/(UNDER) RECOVERY 26/02/2021 - 25/03/2021	(74.602)	(69.997)	(42.676)	(41.297)	(39.813)

ANALYSIS MOVEMENT OF AVERAGE OVER/(UNDER) RECOVERY

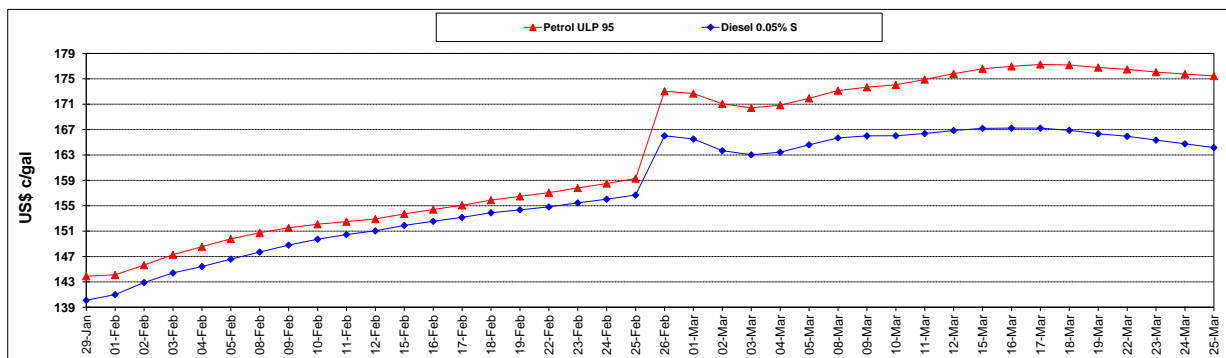
	PETROL 95	PETROL 93	DIESEL 0.05%	DIESEL 0.005%	ILL. PAR.
- MOVEMENT IN INTERNATIONAL PRODUCT PRICES	(63.921)	(59.486)	(32.607)	(31.188)	(30.071)
- MOVEMENT IN EXCHANGE RATE	(10.681)	(10.511)	(10.069)	(10.109)	(9.742)
AVERAGE UNIT OVER/(UNDER) RECOVERY 26/02/2021 - 25/03/2021	(74.602)	(69.997)	(42.676)	(41.297)	(39.813)

R/\$ EXCHANGE RATE - (R/\$14.9455 - 25/03/2021)

EXCHANGE RATE USED IN BASIC FUEL PRICE



INTERNATIONAL PRODUCT PRICES OF BASKET USED IN BASIC FUEL PRICE



BASIC FUEL PRICE IN SA CENTS PER LITRE

